



Woolahra Sailing Club

Extra event Info



www.woollahrasailingclub.org.au

2 Vickery Avenue Rose Bay,
Sydney NSW 2029 Australia

Email: sail@woollahrasailingclub.org.au

Tel: (02) 9371 9805



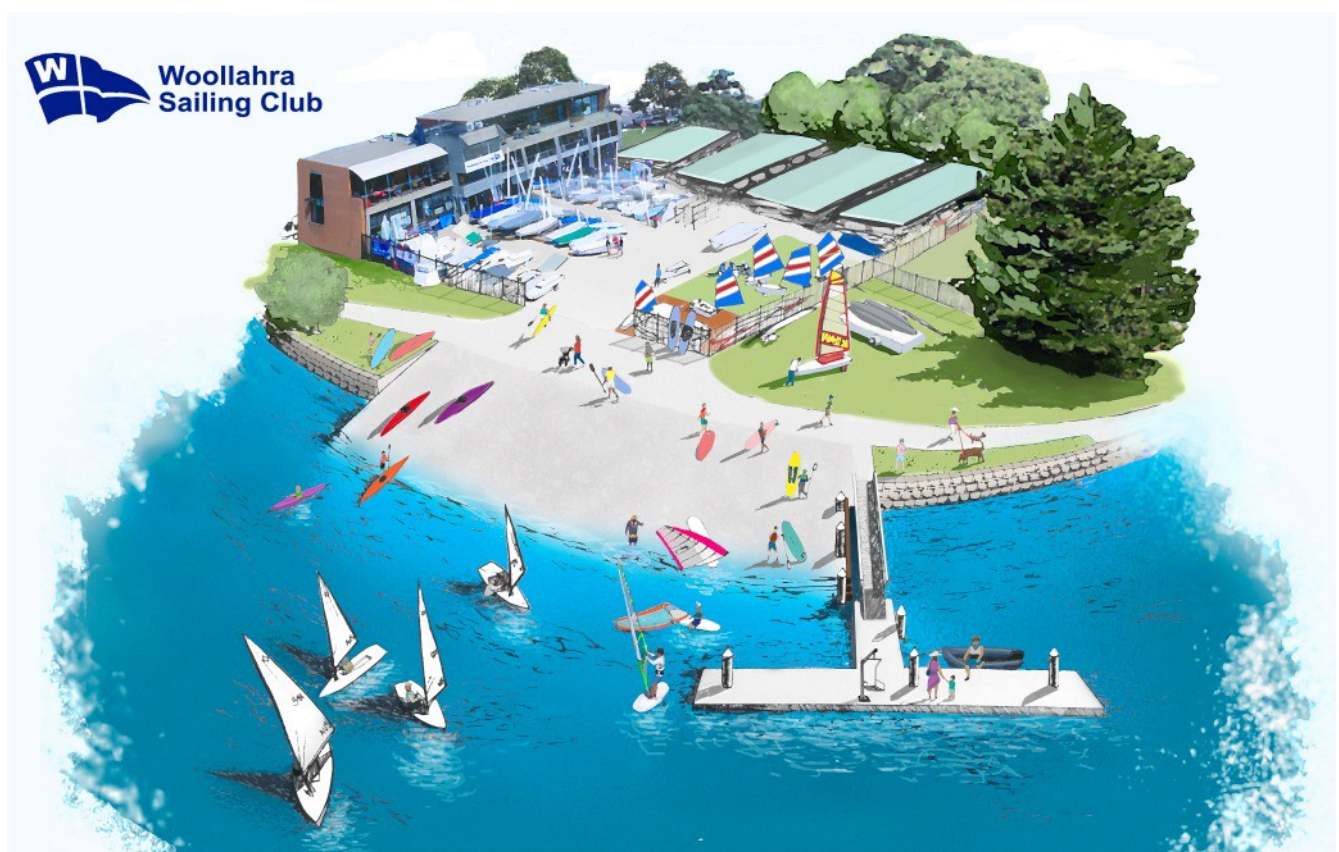
Woollahra Sailing Club

ABN: 46 000 344 178

Welcome to Woollahra Sailing Club

Woollahra Sailing Club is home to one of the most impressive dinghy clubs in Australia. Situated overlooking picturesque Rose Bay, enjoy some of Sydney's best views and some of the best dinghy sailing facilities on the Harbour. Only a short Drive from the CBD or an invigorating 15-minute ferry ride and 30 minutes from [Sydney Airport](#), the club's location in both spectacular and convenient. To many, it is a gem waiting to be discovered.

Woollahra Sailing Club is well known to the wider sailing community as an outstanding host of regattas and prestige events over many years, with our club playing host to numerous state, national and world championships. The club has seen Sail Sydney event for dinghies Olympic, Youth & invited classes become one of the largest of its kind in the Southern hemisphere.





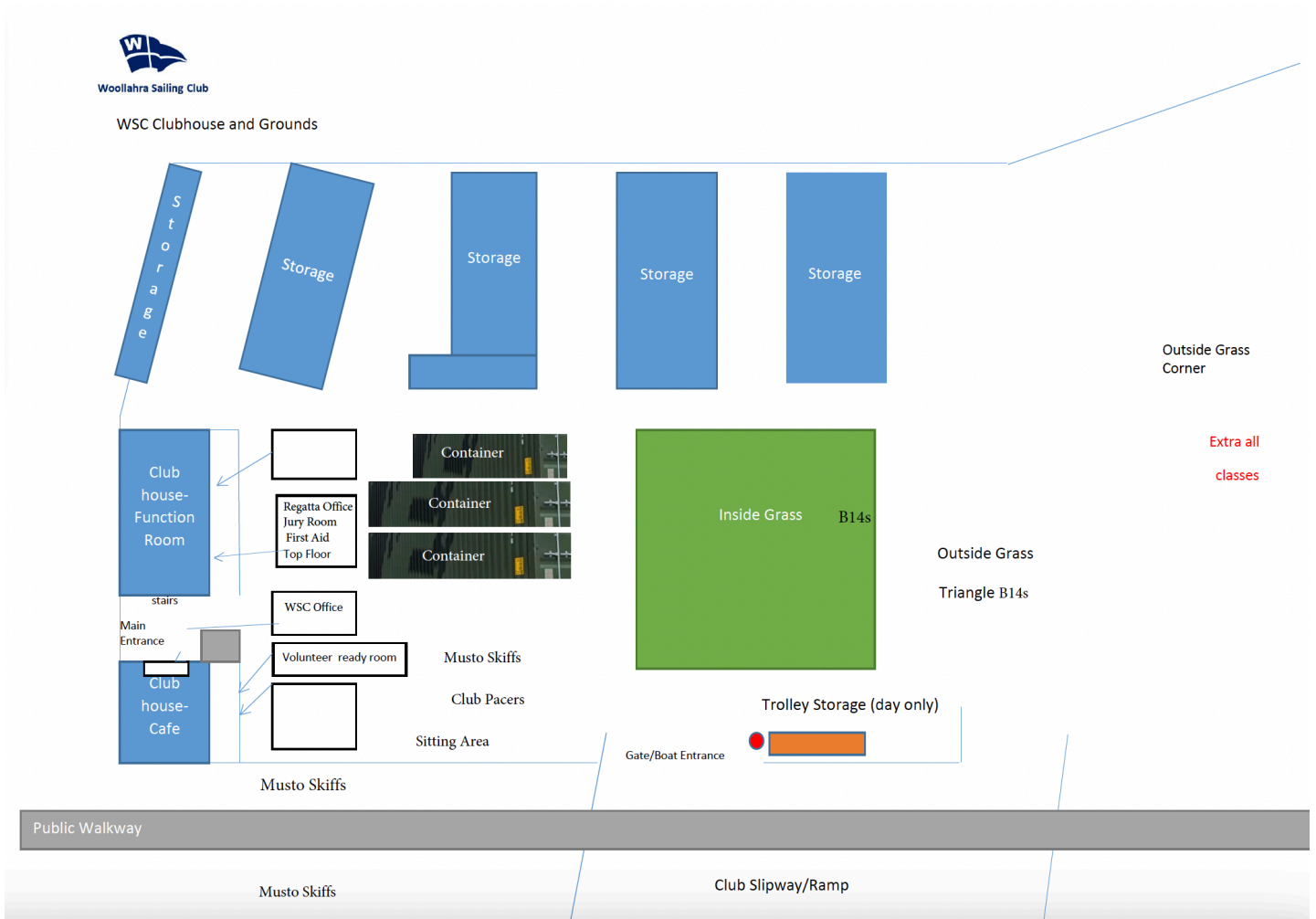
Site Maps

Worlds 'Trailer Parking' is located near the Rose Bay boat ramp (Blue area) Please disconnect your trailer on the road near Catalina's restaurant boom gate and push trailers into the parking area alternatively push trailers from the club foreshore (yellow arrow) to the marked trailer parking area. No car access allowed in trailer parking. Unloading your boats from trailers is at the front of Woollahra Sailing Club. Unload and walk boat to allocated rigging area (Pink area). No trailers are to be stored in rigging areas.





Club Grounds & Allocated Rigging Areas





Woolahra Sailing Club

ABN: 46 000 344 178

Launching & Rigging facilities (Latitude -33.870148 Longitude 151.265156)

Woolahra Sailing Clubs launching facility is world class, with no shipping obstructions, nor known limitations for either weather conditions or seas states.

Video Link boat park flow/movement





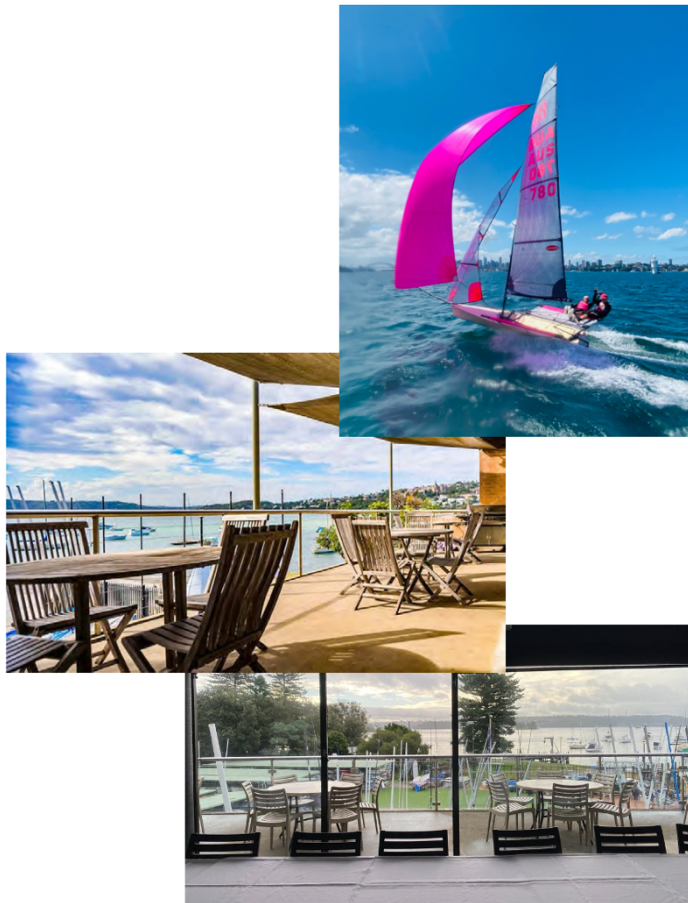
Race Equipment

Woollahra Sailing Club race management vessels and course equipment. Start boat, Finish boat plus inflatable ribs for Safety, Jury, Mark Lay Vessels, Race Buoys + tackle plus required safety equipment.



Off the water and in the club

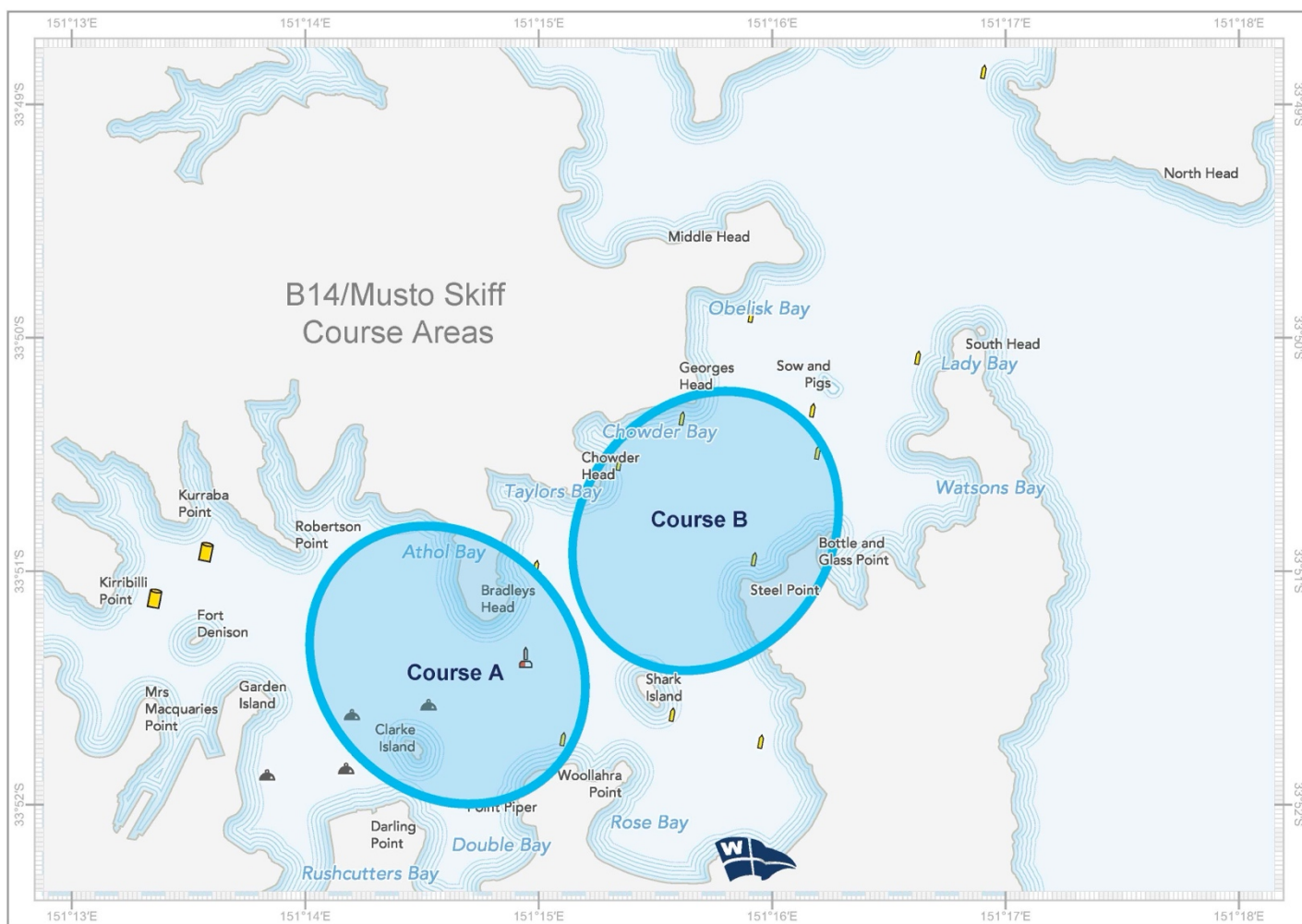
Off the water with its magnificent waterfront venue overlooking Sydney Harbour, Woollahra Sailing Club has 2 main function spaces where competitors can relax and enjoy the event onshore. Our excellent Cafe with BBQ facilities will have a range of food at family friendly prices, open at peak times during the event. Spacious change room and shower facilities are located within the club.





Racing Areas

Woolahra Sailing Clubs access to Sydney Harbour is ideal with access to various racing areas for championships and regattas, providing opportunity for optimal courses to be laid in any wind direction, sea state and wave conditions giving sailors the experience in some of the best sailing conditions in the world. With stunning Harbour backdrops and spectator locations, Sydney sailing is truly unique and impressive. Racing Areas were sailed during the Sydney 2000 Olympic Games sailing competition.





Commercial vessel & Ferry Routes

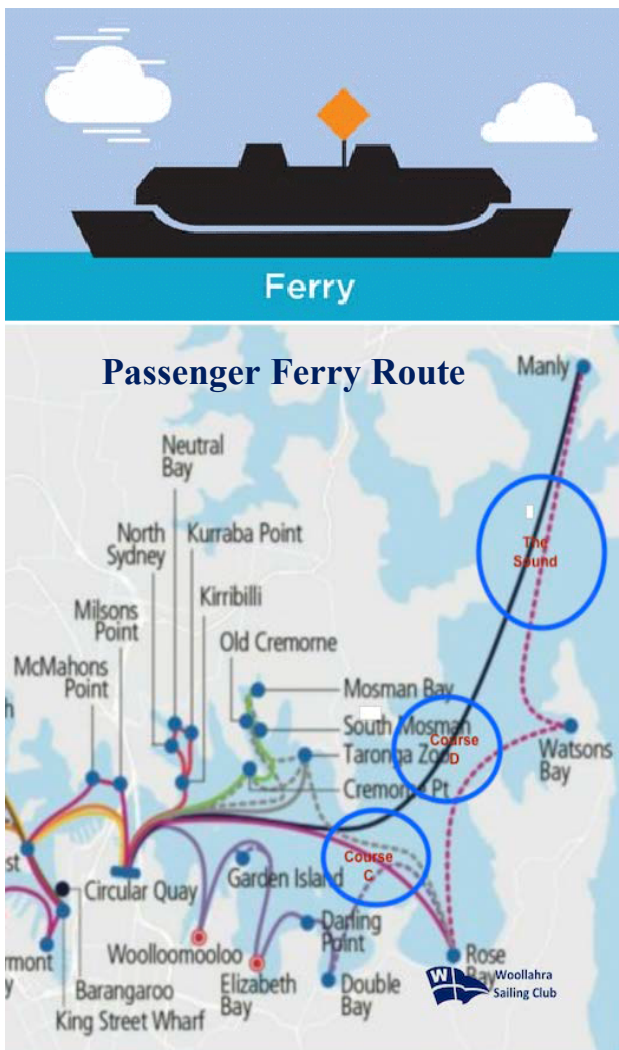
Commercial Vessels and Ferries operate on Sydney Harbour with limited interference or postponement to racing. However, safety considerations and regulations are required where sailors will be made aware at briefings and sailing document attachments. The PRO will be aware of the timing of any commercial shipping movements daily and the Ports Authority will be aware of the event taking place. Commercial shipping is very limited in Sydney Harbour with vessel movements available via the link www.portauthoritiesnsw.com.au

Sydney Harbour Ferries commute approximately every 30minutes. Racing areas will have limited impact from the ferries however safety considerations and regulations required sailors will be made aware in briefings and sailing document attachments.

Sailing vessels cannot claim 'Right-of-way' over a ferry displaying the orange diamond shape.

Sailing vessels must keep a minimum distance from these ferries of:

- 200m from the bow
- 30m from the sides or stern

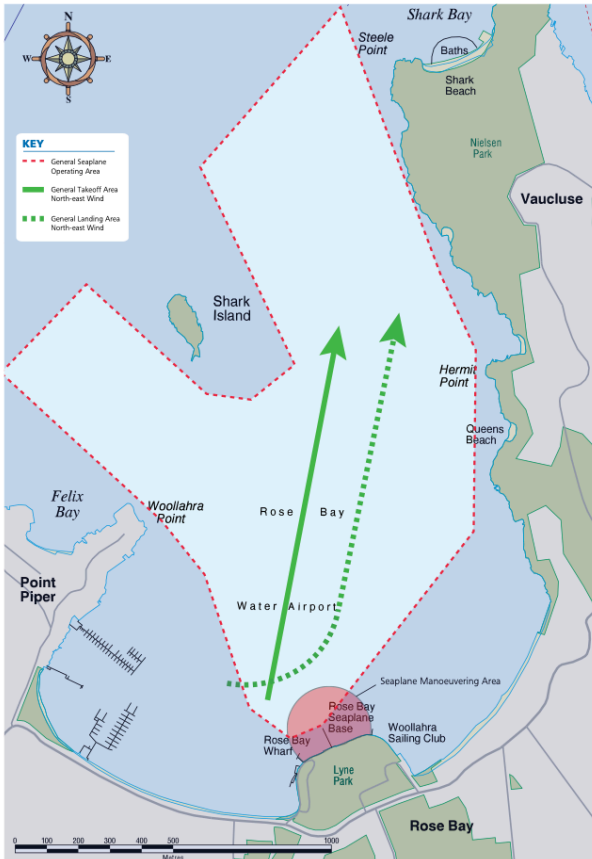




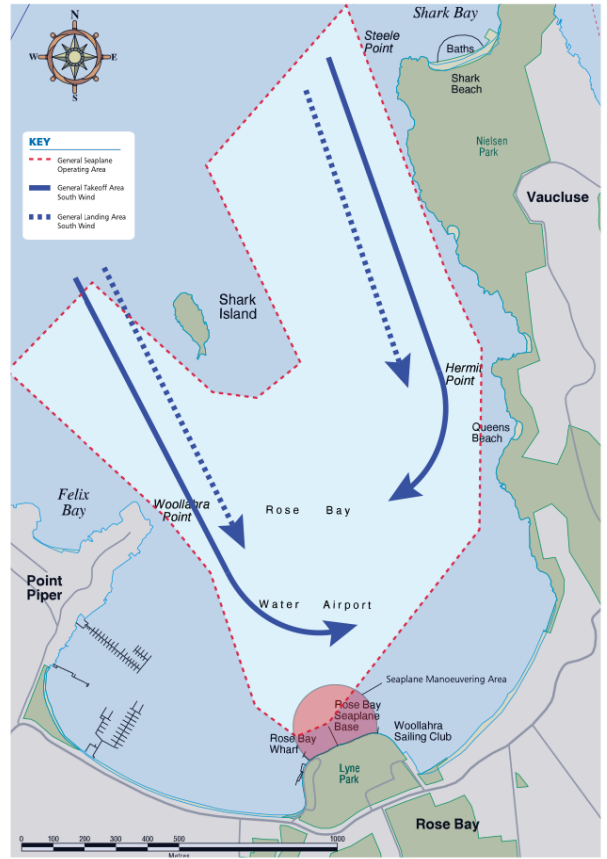
Best Practice Guide for Use of Rose Bay

Sea Planes fly and Take of from Rose Bay Near Woollahra Sailing Club . Please view best practice guide for more knowledge.

Normal seaplane operations North-east wind



Normal seaplane operations South wind





Wind Conditions

Sydney's summer months generally see 12 – 20 knots afternoon Northeast Sea Breezes & Southerly Winds (Please see attached data below) with an average air temperature of 20 degrees Celsius. WSC sailing management can assist with further local knowledge on the venue conditions and course locations. [Detailed weather information link.](#)

Rose of Wind direction versus Wind speed in km/h (01 Apr 1939 to 24 Jul 2019)

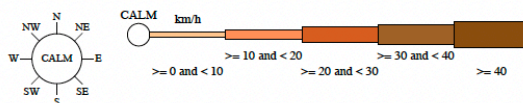
Custom times selected, refer to attached note for details

SYDNEY AIRPORT AMO

Site No: 066037 • Opened Jan 1929 • Still Open • Latitude: -33.9465° • Longitude: 151.1731° • Elevation 6m

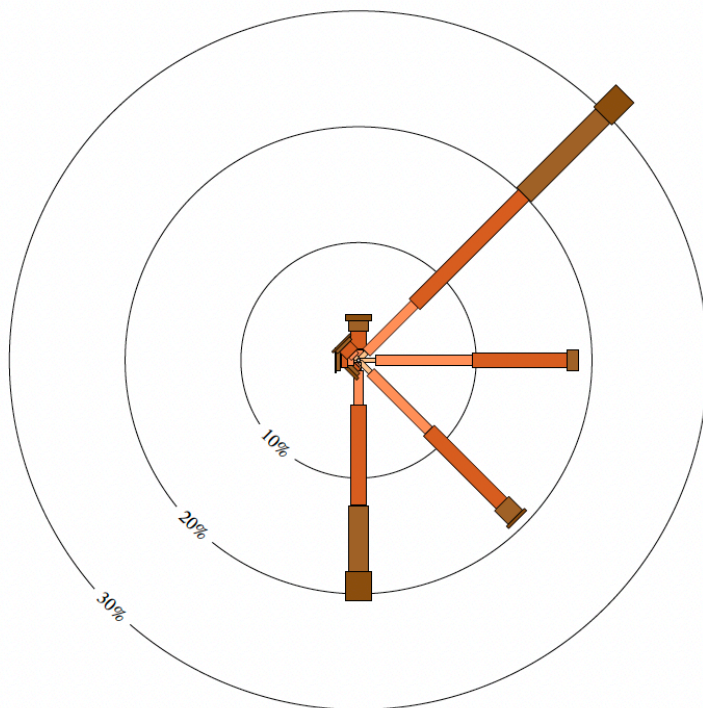
An asterisk (*) indicates that calm is less than 0.5%.

Other important info about this analysis is available in the accompanying notes.



3 pm Jan
2404 Total Observations

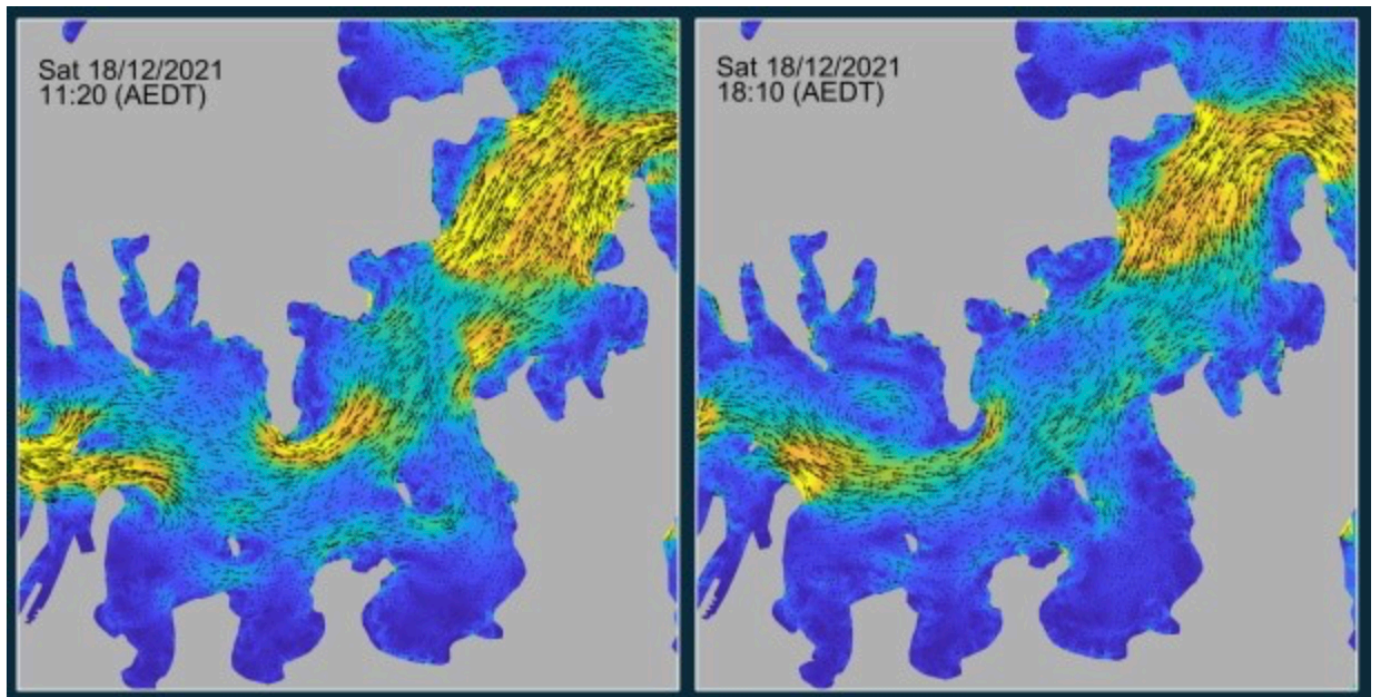
Calm 1%



Sydney Harbour Tides

Tidal currents in the Sydney race area

Currents in Sydney Harbour are caused by the regular rise and fall of the tide, with two high water and two low water periods each day. The water moving into and out of the area interacts with the unique and detailed shape of the harbour, including the many bays, headlands and islands, and the local water depth.



Tidal current visualisations around the Sydney race area during ebb (left) and flood (right) tidal phases

Tide times can be found [HERE](#)



Woollahra Sailing Club

ABN: 46 000 344 178

Medical

[Rose Bay Medical Clinic](#)

Address: 2/733 New South Head Rd, Rose Bay NSW 2029

Phone: [\(02\) 9371 1100](tel:(02)93711100)

[Hours:](#)

Monday	8 am–6 pm
Tuesday	8 am–6 pm
Wednesday	8 am–6 pm
Thursday	8 am–6 pm
Friday	8 am–6 pm
Saturday	9 am–12 pm
Sunday	9 am–12 pm

[St Vincents Hospital](#)

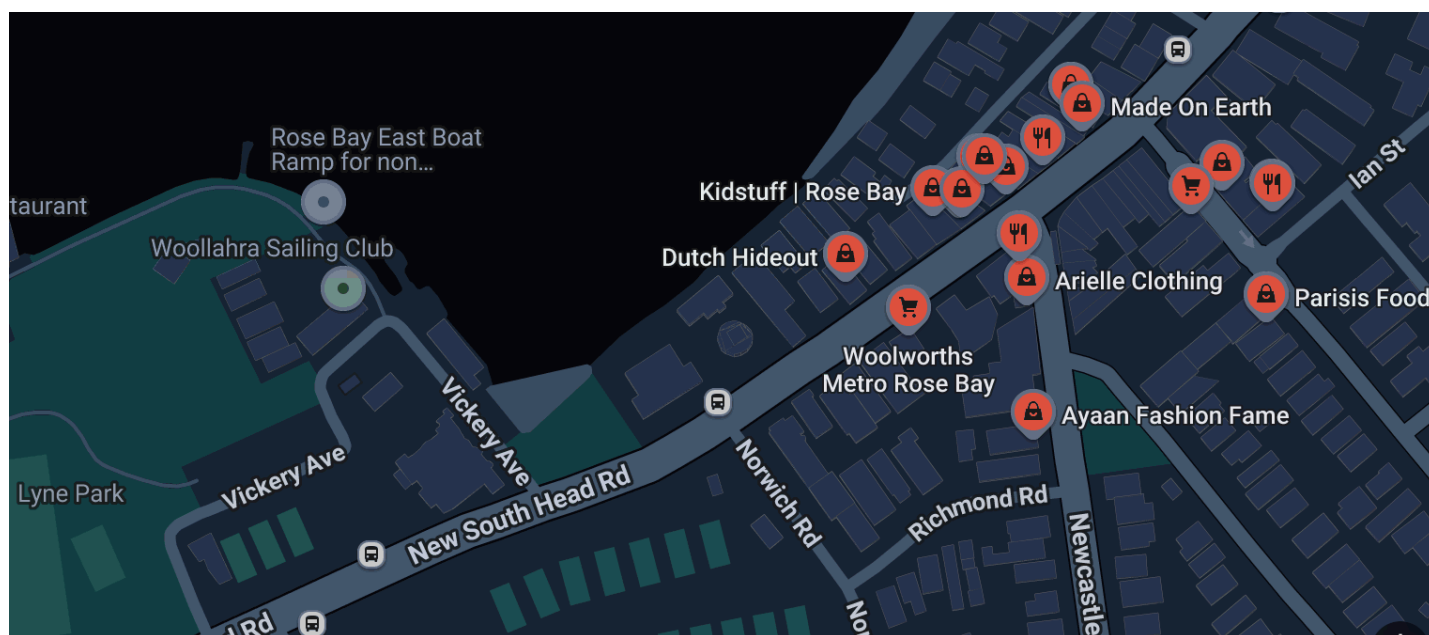
390 Victoria Street

Darlinghurst NSW 2010

T: 02 8382 1111

Shops, Bread & Coffee

Rose Bay shops are located in walking distance (5-10mins) from Woollahra Sailing Club where you can find Woolworths grocery store, chemist and a variety of stores. Our local coffee shop 'Sugar n Spoon' at the tennis courts is supporting competitors and families with 10% discount. Larger shopping precinct in Westfield Bondi Junction (10mins car, 15mins Bus)





Visit Sydney

With its sublime setting, glamorous beaches, and appetite for the fine things in life, Sydney is one of the world's great destinations. Australia's biggest and most cosmopolitan city is an essential stop in any traveller's itinerary.

The casual outdoor lifestyle appeals to anyone who likes to combine relaxing with plenty of stimulation. Some of the best beaches in the world are here - Manly and Bondi - and there's a whole coastline of great surfing beaches to the north and south of Sydney. Food lovers will find many dining choices from five-star harbourside restaurants to funky street eats, clubs and bars.

Surrounding Sydney are national parks, World Heritage regions, mountains, and countryside. These regions are easily accessible from Sydney, even the astonishing outback which can be reached by regular flights from Sydney.

For more information, places to see, things to do, go to

- www.visitnsw.com
- www.sydney.com



Accommodation near by

Sydney has a range of accommodation options available for competitors, guests and officials near Woollahra Sailing Club with convenient public transport options bus, ferry or uber recommended mode of transport. Why not experience the local beach life and stay at the world famous Bondi Beach with a casual 15 minute bike ride to the venue.

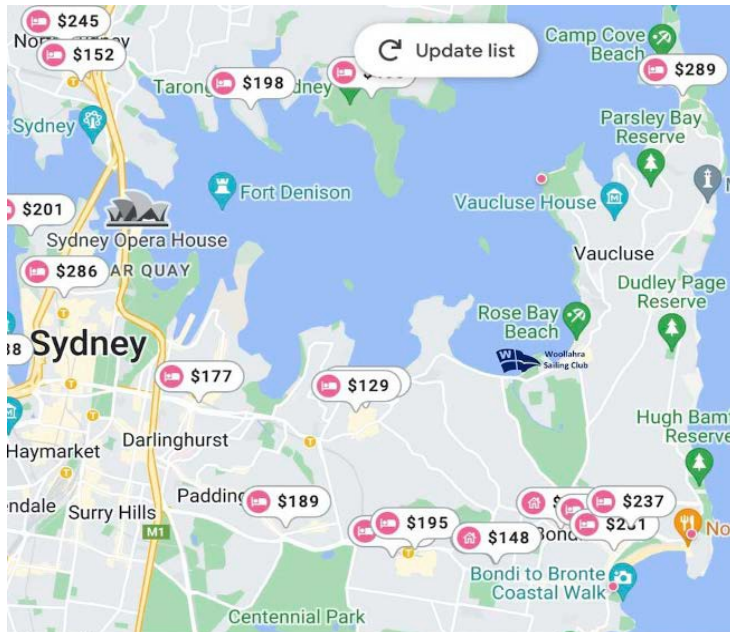
[Check out the B14's Transport Guide & Tips](#)

- **Edgecliff Lodge Motel**
44 New South Head Rd, Edgecliff Ph:
+61 2 9328 0666
Fax: +61 2 9328 0555
Web: Edgecliff Lodge Motel
- **The Savoy Double Bay**
Hotel 41 - 45 Knox
Street, Double Bay
Ph: +61 2 9326 1411
Web: <https://www.savoyhotel.com.au>
- **Vibe Rushcutters Hotel**
100 Bayswater Road, Rushcutters Bay
Ph: + 61 2 8353 8988
Fax: + 61 2 8353 8999
Web: www.vibehotels.com.au
Email: vhers@vibehotels.com.au
- **Air BnB accommodation**
Web: Air BnB Sydney Australia





Accommodation Map



Boat Charters & Shipping

Woollahra Sailing Club

Tel: (02) 9371 9805

Email: sail@woollahrasailingclub.org.au

Ship Chandleries & Supplies

NBSailsports (at Woollahra Sailing Club)

<https://www.nbsailsports.com.au/pages/contact-us>

Whitworths

<https://www.whitworths.com.au>

Sturrocks Ship Chandlers

<https://www.sturrocks.com.au>

Sail Lofts

Doyle Sails Australia <https://www.doylesails.com>

Hood Sails <https://www.hoodaustralia.com.au>

North Sails <https://www.northsails.com/sailing/en/locations/sydney-australia>

